

WeMacro control box firmware update guide

Firmware Version14

1

Please download the zip file from

<http://www.wemacro.com/wp/wp-content/uploads/wemacroudate2.zip>

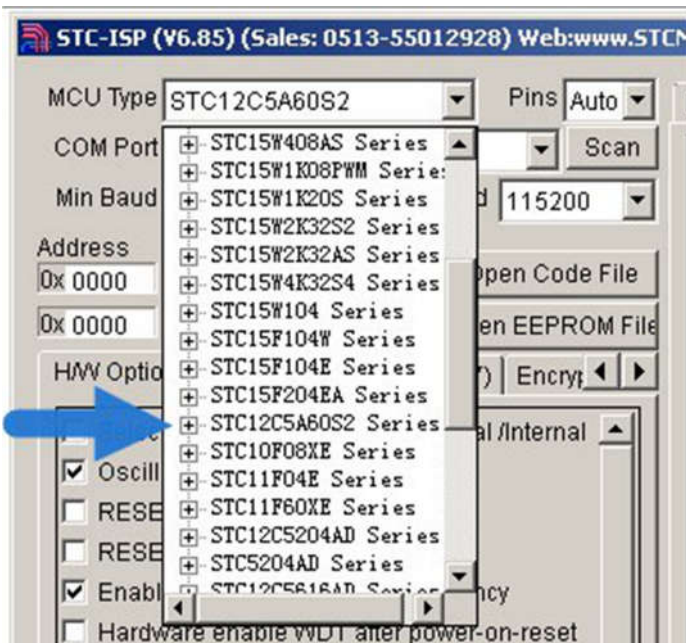
And extract all files to a folder. Connect USB cable from PC to control box. Connect 12V power supply to control box, but keep it power off first.

2

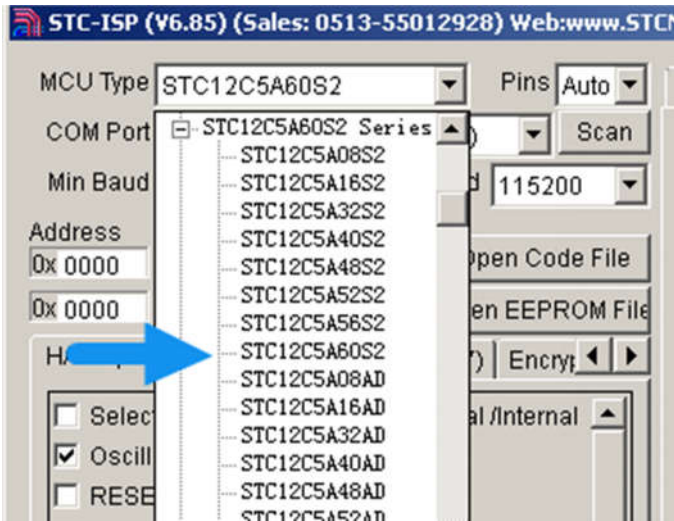
Double click stc.exe

In MCU type choose "STC12C5A60S2"

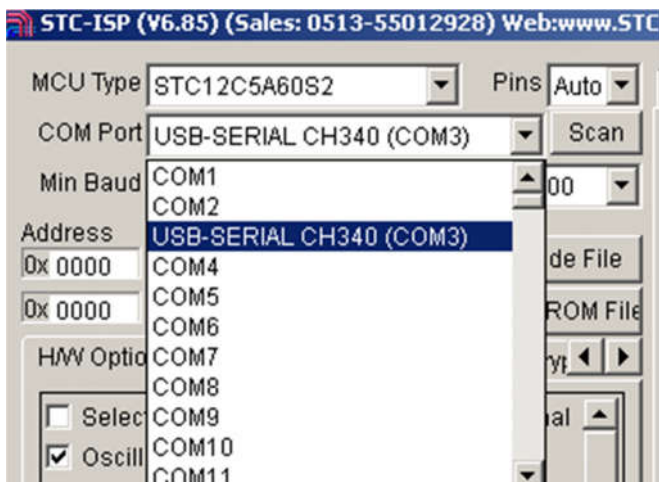
As picture shows:



Click "+" mark on STC12C5A60S2 Series ,then choose STC12C5A60S2

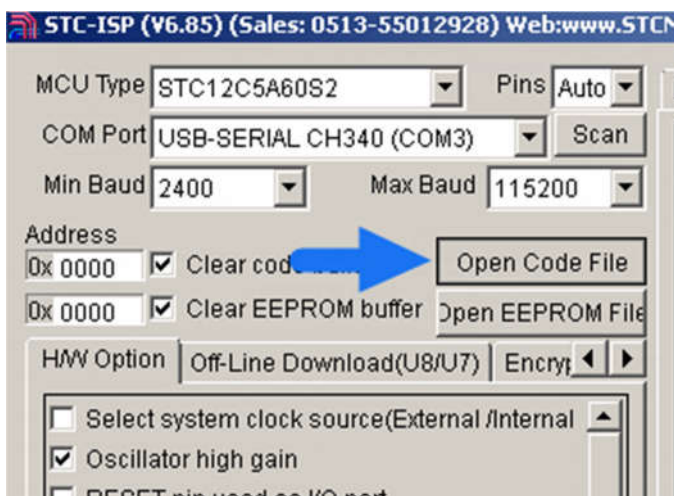


COM Port setting shows as below: Please choose USB-SERIAL CH340



3

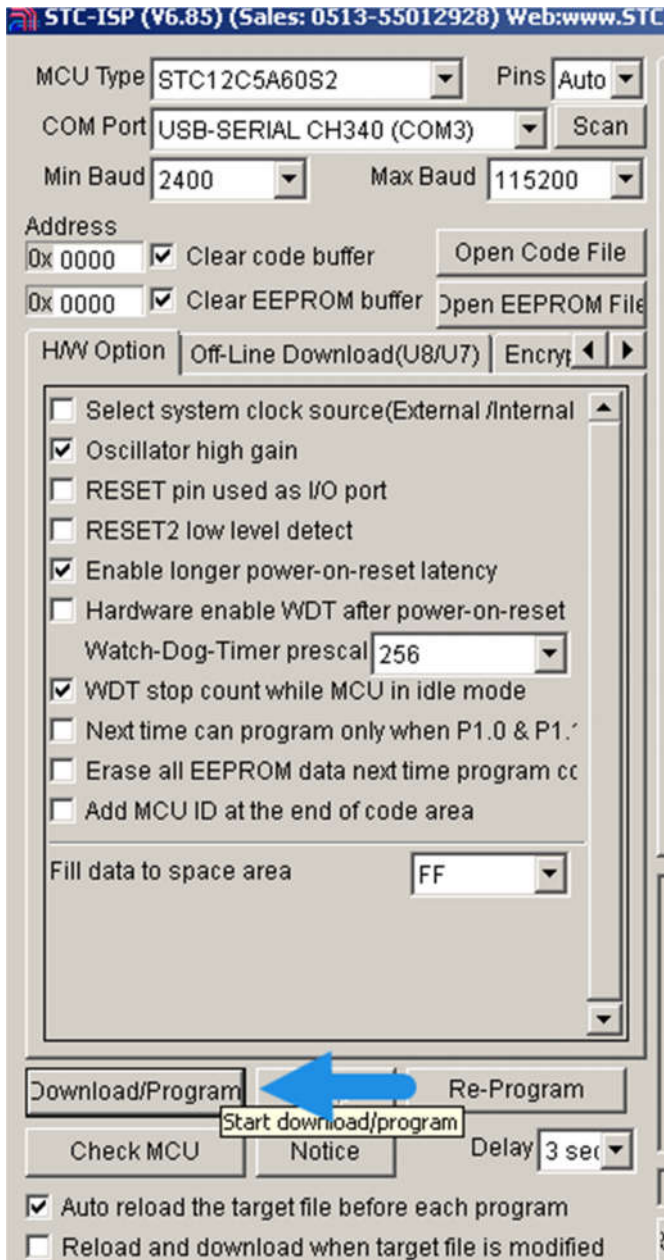
Press "Open Code File"



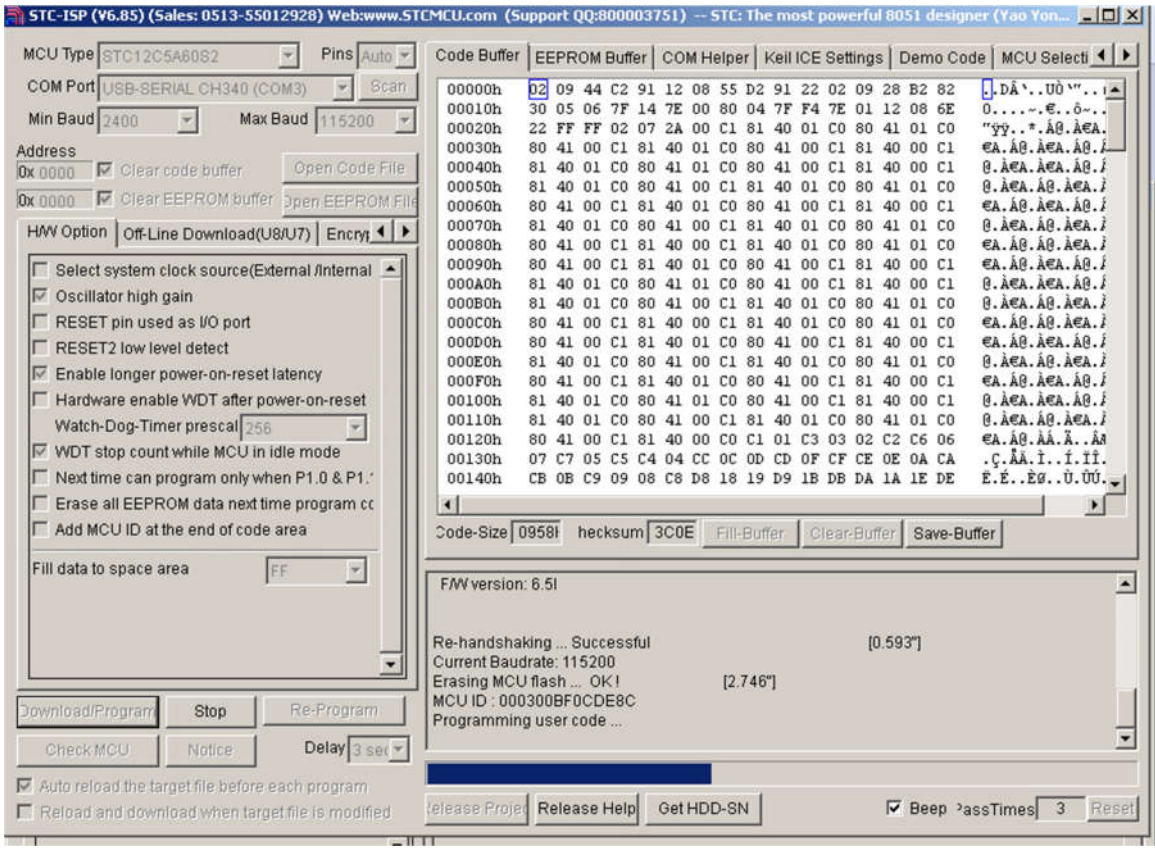
Choose the hex file "fw14.hex" you just extracted from the zip file. Press "Open".

4

Press "Download/Program"



Then turn on the power of the box. It will show as below



After the "progress bar" is completed, the update is finished.